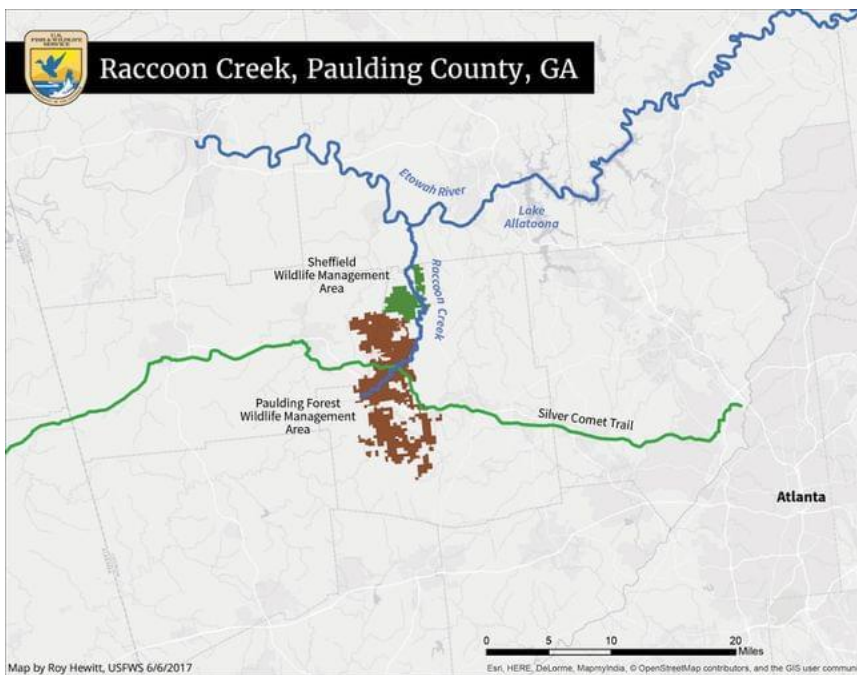


Magnet Students- Raccoon Creek Field Summer Research Positions Available

- Experiential field research opportunities in Paulding County
- Build your resumé with professional references from KSU and Clemson University
- Gain authentic research opportunities for your college applications and scholarships
- Discover the exciting careers of conservation and wildlife biology

There is an opportunity to conduct field research this summer in the Raccoon Creek watershed and surrounding area. Students must be able to commit to go into the field once each week from June-July. There will be opportunities before school gets out to go out with Mr. Pedersen and other professionals from KSU and Clemson University to learn about these exciting opportunities. Students that commit to a summer position will receive additional training and gain valuable experiences that will be great for college applications and scholarships. This is an extremely diverse and pristine area of Paulding County (see map below) with numerous protected species in the montane longleaf pine ecosystem. Students will be trained on radio telemetry of two targeted snake species (nonvenomous). These students will learn how to radio-track Pine snakes and Eastern King snakes that have radio transmitters surgically implanted in their coelomic cavities. Students will also monitor fence traps that are used to collect anatomical data on various snake species. Lastly, students will monitor and process video array traps that capture video and pictures using an infrared detector. If interested, please join the remind below to be informed of opportunities and trainings. Remember, we need students that can go about once each week into the field with a professional throughout the majority of the summer. See Mr. Pedersen if you have any questions. What an awesome opportunity!



Please join the remind below:

