

Dissolved Oxygen Probe

(Order Code: DO-BTA)



The Vernier Dissolved Oxygen Probe uses a Clark-type polarographic electrode to measure the concentration of dissolved oxygen in water. You can use this sensor to perform a wide variety of tests or experiments to determine changes in dissolved oxygen levels, one of the primary indicators of the quality of an aquatic environment.

Note: Vernier products are designed for educational use. Our products are not designed nor are they recommended for any industrial, medical, or commercial process such as life support, patient diagnosis, control of a manufacturing process, or industrial testing of any kind.

What's Included

- Dissolved Oxygen Probe (one membrane cap attached)
- Replacement membrane cap
- Sodium Sulfite Calibration Standard (2.0 M Na_2SO_3) with Safety Data Sheet (SDS)
- DO Electrode Filling Solution, SDS, and filling pipet
- Calibration bottle (empty, lid with hole)
- DO Polishing Strips (1 pkg)

Compatible Software and Interfaces

See www.vernier.com/manuals/do-bta for a list of interfaces and software compatible with the Dissolved Oxygen Probe.

Assembly

1. Remove the blue protective cap from the tip of the probe.
2. Unscrew the membrane cap from the tip of the probe. Do not touch the membrane. Oil from your skin could cause damage.



Remove membrane cap



Add electrode filling solution



Replace membrane cap

3. Use a pipet to fill the membrane cap with 1 mL of DO Electrode Filling Solution.
4. Carefully thread the membrane cap back onto the electrode. Some filling solution should overflow during this process.

5. Rinse the probe and place it in distilled water. **Note:** Do not completely submerge; the handle is not waterproof.

Getting Started

1. Once assembly is complete, connect the sensor to the interface (LabQuest Mini, LabQuest 2, etc.).
2. Start the appropriate data-collection software (Logger Pro, Logger Lite, LabQuest App) if not already running, and choose New from File menu. The software will identify the sensor and load a default data-collection setup.
3. While keeping the probe soaking in distilled water, allow it to warm up for at least 10 minutes prior to use.

You are now ready to continue your experiment.

If you are collecting data using a Chromebook™, mobile device such as iPad® or Android™ tablet, or a Vernier wireless sensor or interface, please see the following link for up-to-date connection information:

www.vernier.com/start/do-bta

Using the Product

1. Assemble and warm up the probe following the steps in the previous sections of this user manual.
2. Place the tip of the probe into the sample deep enough that the silver dot on the shaft (thermistor for temperature compensation) is submerged, but not the handle. The handle is not waterproof.
3. Gently stir the probe in the water. Monitor the dissolved oxygen concentration in the live readouts.
 - It is important to keep moving the probe in the water sample. There must always be water flowing past the probe tip while taking measurements due to the consumption of oxygen at the membrane. If the probe is left still in calm water, reported DO readings will drop erroneously.
 - If the water is not at room temperature, it is important to leave the probe in the water long enough for the integrated thermistor, responsible for the automatic temperature compensation, to have time to equilibrate; at least two minutes.

Videos

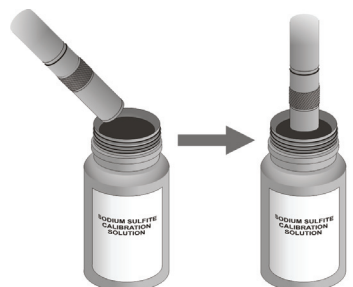
View videos related to this product at www.vernier.com/do-bta

Calibration

It is not always necessary to perform a new calibration when using the Dissolved Oxygen Probe. If your experiment or application is measuring the change in dissolved oxygen concentration, the stored calibration should suffice. When accuracy matters, consider performing a new calibration.

1. After warming up the probe, enter the calibration routine in the software and begin a new calibration.

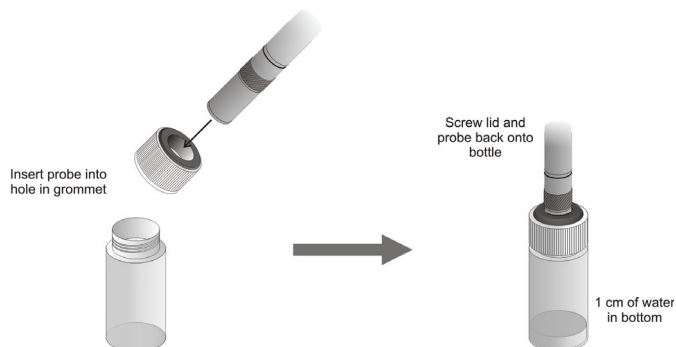
2. **First Calibration Point** Remove the probe from the water, blot dry, and place the tip of the probe into the Sodium Sulfite Calibration Solution. The displayed voltage should begin to drop.
3. When the displayed voltage reading stabilizes, enter 0 (the known dissolved oxygen value in mg/L) in the edit field.



Insert probe at an angle

Submerge probe tip 1-2 cm

4. **Second Calibration Point** Rinse the probe well with distilled water and gently blot dry. The displayed voltage should begin to rise.



Insert probe into hole in grommet

Screw lid and probe back onto bottle

1 cm of water in bottom

5. Remove the lid from the empty calibration bottle provided with the probe. Slide the lid 1–2 cm onto the probe body.
6. Add water to the bottle to a depth of about 1 cm and screw the bottle into the cap, as shown. **Important:** Do not touch the membrane or get it wet during this step.
7. When the displayed voltage reading stabilizes, enter the saturated dissolved oxygen value (in mg/L) from Table 1 using the current air pressure and temperature values.
 - If you do not know the current air pressure, use Table 2 to estimate the air pressure at your altitude. If these tables do not extend to your elevation, see www.vernier.com/til/2108 for more information.
 - If your sample water has a salinity greater than 1000 mg/L, the saturated dissolved oxygen value will need to be calculated. See www.vernier.com/til/3715 for instructions.

You can also store your custom calibration on the sensor using the following steps:

1. Go to the Storage tab and click the Set Sensor Calibration button (*Logger Pro*) or Save Calibration to Sensor (*LabQuest*). Once saved, this new calibration will be used automatically, regardless of the interface to which the sensor is connected.
2. Click Done to complete the calibration process.
 - For instructions on calibration using *Logger Pro* computer software, see www.vernier.com/til/2341
 - For instructions on calibration using *LabQuest App*, see www.vernier.com/til/3394
 - For instructions on calibration using *Graphical Analysis* with a Chromebook, see www.vernier.com/til/3631
 - For instructions on calibration using *Graphical Analysis* with an iOS or Android device, see www.vernier.com/til/3630

Table 1 Dissolved oxygen (mg/L) in air-saturated distilled water at various temperatures and pressures (mm Hg)

	770	760	750	740	730	720	710	700
0°C	14.76	14.57	14.38	14.19	13.99	13.80	13.61	13.42
1°C	14.38	14.19	14.00	13.82	13.63	13.44	13.26	13.07
2°C	14.01	13.82	13.64	13.46	13.28	13.10	12.92	12.73
3°C	13.65	13.47	13.29	13.12	12.94	12.76	12.59	12.41
4°C	13.31	13.13	12.96	12.79	12.61	12.44	12.27	12.10
5°C	12.97	12.81	12.64	12.47	12.30	12.13	11.96	11.80
6°C	12.66	12.49	12.33	12.16	12.00	11.83	11.67	11.51
7°C	12.35	12.19	12.03	11.87	11.71	11.55	11.39	11.23
8°C	12.05	11.90	11.74	11.58	11.43	11.27	11.11	10.96
9°C	11.77	11.62	11.46	11.31	11.16	11.01	10.85	10.70
10°C	11.50	11.35	11.20	11.05	10.90	10.75	10.60	10.45
11°C	11.24	11.09	10.94	10.80	10.65	10.51	10.36	10.21
12°C	10.98	10.84	10.70	10.56	10.41	10.27	10.13	9.99
13°C	10.74	10.60	10.46	10.32	10.18	10.04	9.90	9.77
14°C	10.51	10.37	10.24	10.10	9.96	9.83	9.69	9.55
15°C	10.29	10.15	10.02	9.88	9.75	9.62	9.48	9.35
16°C	10.07	9.94	9.81	9.68	9.55	9.42	9.29	9.15
17°C	9.86	9.74	9.61	9.48	9.35	9.22	9.10	8.97
18°C	9.67	9.54	9.41	9.29	9.16	9.04	8.91	8.79
19°C	9.47	9.35	9.23	9.11	8.98	8.86	8.74	8.61
20°C	9.29	9.17	9.05	8.93	8.81	8.69	8.57	8.45
21°C	9.11	9.00	8.88	8.76	8.64	8.52	8.40	8.28
22°C	8.94	8.83	8.71	8.59	8.48	8.36	8.25	8.13
23°C	8.78	8.66	8.55	8.44	8.32	8.21	8.09	7.98
24°C	8.62	8.51	8.40	8.28	8.17	8.06	7.95	7.84
25°C	8.47	8.36	8.25	8.14	8.03	7.92	7.81	7.70
26°C	8.32	8.21	8.10	7.99	7.89	7.78	7.67	7.56
27°C	8.17	8.07	7.96	7.86	7.75	7.64	7.54	7.43
28°C	8.04	7.93	7.83	7.72	7.62	7.51	7.41	7.30
29°C	7.90	7.80	7.69	7.59	7.49	7.39	7.28	7.18
30°C	7.77	7.67	7.57	7.47	7.36	7.26	7.16	7.06
31°C	7.64	7.54	7.44	7.34	7.24	7.14	7.04	6.94
32°C	7.51	7.42	7.32	7.22	7.12	7.03	6.93	6.83
33°C	7.39	7.29	7.20	7.10	7.01	6.91	6.81	6.72
34°C	7.27	7.17	7.08	6.98	6.89	6.80	6.70	6.61
35°C	7.15	7.05	6.96	6.87	6.78	6.68	6.59	6.50

Table 1, cont. Dissolved oxygen (mg/L) in air-saturated distilled water at various temperatures and pressures (mm Hg)

	690	680	670	660	650
0°C	13.23	13.04	12.84	12.65	12.46
1°C	12.88	12.70	12.51	12.32	12.14
2°C	12.55	12.37	12.19	12.01	11.82
3°C	12.23	12.05	11.88	11.70	11.52
4°C	11.92	11.75	11.58	11.40	11.23
5°C	11.63	11.46	11.29	11.12	10.95
6°C	11.34	11.18	11.01	10.85	10.68
7°C	11.07	10.91	10.75	10.59	10.42
8°C	10.80	10.65	10.49	10.33	10.18
9°C	10.55	10.39	10.24	10.09	9.94
10°C	10.30	10.15	10.00	9.86	9.71
11°C	10.07	9.92	9.78	9.63	9.48
12°C	9.84	9.70	9.56	9.41	9.27
13°C	9.63	9.49	9.35	9.21	9.07
14°C	9.42	9.28	9.14	9.01	8.87
15°C	9.22	9.08	8.95	8.82	8.68
16°C	9.02	8.89	8.76	8.63	8.50
17°C	8.84	8.71	8.58	8.45	8.33
18°C	8.66	8.54	8.41	8.28	8.16
19°C	8.49	8.37	8.24	8.12	8.00
20°C	8.33	8.20	8.08	7.96	7.84
21°C	8.17	8.05	7.93	7.81	7.69
22°C	8.01	7.90	7.78	7.67	7.55
23°C	7.87	7.75	7.64	7.52	7.41
24°C	7.72	7.61	7.50	7.39	7.28
25°C	7.59	7.48	7.37	7.26	7.15
26°C	7.45	7.35	7.24	7.13	7.02
27°C	7.33	7.22	7.11	7.01	6.90
28°C	7.20	7.10	6.99	6.89	6.78
29°C	7.08	6.98	6.87	6.77	6.67
30°C	6.96	6.86	6.76	6.66	6.56
31°C	6.85	6.75	6.65	6.55	6.45
32°C	6.73	6.63	6.54	6.44	6.34
33°C	6.62	6.53	6.43	6.33	6.24
34°C	6.51	6.42	6.32	6.23	6.13
35°C	6.40	6.31	6.22	6.13	6.03

Table 2 Approximate barometric pressure at various elevations

Elevation (feet)	Pressure (mm Hg)	Elevation (feet)	Pressure (mm Hg)	Elevation (feet)	Pressure (mm Hg)
0	760	2000	708	4000	659
250	753	2250	702	4250	653
500	746	2500	695	4500	647
750	739	2750	689	4750	641
1000	733	3000	683	5000	635
1250	727	3250	677	5250	629
1500	720	3500	671	5500	624
1750	714	3750	665	5750	618

Specifications

Type	Clark-type polarographic electrode
Range	0 to 15 mg/L (or ppm)
Accuracy	±0.2 mg/L with calibration
Response time	95% of final reading in 30 s, 98% in 45 s
Temperature compensation	Automatic from 5 to 35°C
Pressure compensation	Manual, accounted for during calibration
Salinity compensation	Manual, accounted for during calibration
Shaft diameter	12 mm OD
Minimum sample flow	20 cm/second
Factory calibration values	slope: -3.838 intercept: 13.720

Care and Maintenance

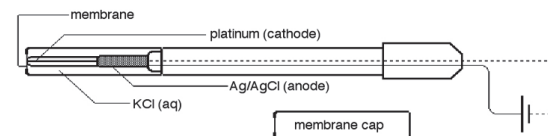
- **Long-term storage (more than 24 hours)** Remove the membrane cap and rinse the inside and outside of the cap with distilled water. Shake the membrane cap dry. Also rinse and dry the exposed anode and cathode inner elements (blot dry with a lab wipe). Reinstall the membrane cap loosely onto the electrode body for storage. Do not screw it on tightly.
- **Short-term storage (less than 24 hours)** Leave the probe assembled with the filling solution inside and place in distilled water. **Note:** Do not completely submerge; the handle is not waterproof.
- **Replacing the membrane cap** The membrane cap will require replacement from time to time; once per year if used infrequently, or after about 6 months of continuous use. Replacement of the membrane cap is recommended when your Dissolved Oxygen Probe will no longer respond rapidly during calibration or when taking readings.
- **Polishing the metal electrodes** If the cathode (the small platinum contact at the tip of the inner stem) and anode (the silver metal surrounding the inner

stem) become discolored or appear corroded, polish them with the polishing strips provided. Perform this operation only as needed to restore electrode performance—it should be necessary only once every year or so. Remove the membrane cap and thoroughly rinse the inner elements of the probe with distilled water to remove all filling solution. Cut a one-inch piece from the DO Electrode Polishing Strip provided. Wet the dull (abrasive) side of the polishing strip with distilled water. Using a circular motion, polish the cathode. Use gentle finger pressure during this polishing operation. Polish only enough to restore a bright, clean surface. Next, polish the anode. Polish only enough to restore a silver appearance. **Note:** Aggressive polishing will damage the probe inner elements. Be sure to use only gentle pressure when performing the polishing of the anode and cathode. When you have completed the polishing, rinse the cathode and anode elements thoroughly and dry with a lab wipe.

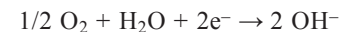
- **Sodium Sulfite Calibration Solution** The 2.0 M sodium sulfite (Na_2SO_3) calibration solution can be purchased (order code DO-CAL). But it can also be prepared from solid sodium sulfite crystals: Add 25.0 g of solid anhydrous sodium sulfite crystals (Na_2SO_3) to enough distilled water to yield a final volume of 100 mL of solution. The sodium sulfite crystals do not need to be reagent grade; laboratory grade will work fine. Prepare the solution 24 hours in advance of doing the calibration to ensure that all oxygen has been depleted. If solid sodium sulfite is not available, you may substitute either 2.0 M sodium hydrogen sulfite solution, (sodium bisulfite, 20.8 g of NaHSO_3 per 100 mL of solution) or 2.0 M potassium nitrite (17.0 g of KNO_2 per 100 mL of solution).
- **DO Electrode Filling Solution** The DO Electrode Filling Solution is primarily a potassium chloride solution. However, it also contains some proprietary ingredients, and must therefore be purchased from Vemier (order code FS).

How the Sensor Works

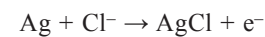
The Vemier Dissolved Oxygen Probe is a Clark-type polarographic electrode that senses the oxygen concentration in water and aqueous solutions. A platinum cathode and a silver/silver chloride reference anode in KCl electrolyte are separated from the sample by a gas-permeable plastic membrane.



A fixed voltage is applied to the platinum electrode. As oxygen diffuses through the membrane to the cathode, it is reduced



The oxidation taking place at the reference electrode (anode) is



Accordingly, a current will flow that is proportional to the rate of diffusion of oxygen, and in turn to the concentration of dissolved oxygen in the sample. This current is converted to a proportional voltage, which is amplified and converted to concentration by the software.

Troubleshooting

Here's a few items to consider if the probe is reading incorrect values:

- Has the blue protective cap been removed?
- Is there filling solution in the probe (with no air bubbles)?
- Was the probe warmed up properly?
- Does the probe need to be calibrated?
- Are any other electrodes being used at the same time? See www.vernier.com/til/638 for interference information.

Calibration voltages are good troubleshooting tools. If you do not see the voltages given below, try a new membrane cap and/or polish the anode and cathode.

- Sodium sulfite solution (zero oxygen) voltage should be between 0.2 and 0.5 volts.
- Calibration bottle (humid environment) voltage should be between 2 and 3 volts.

If the values are slowly dropping, make sure you are moving the probe around in the solution.

For more troubleshooting tips, see www.vernier.com/til/1413

Repair Information

If you have watched the related product video(s), followed the troubleshooting steps, and are still having trouble with your Vernier Dissolved Oxygen Probe, contact Vernier Technical Support at support@vernier.com or call 888-837-6437. Support specialists will work with you to determine if the unit needs to be sent in for repair. At that time, a Return Merchandise Authorization (RMA) number will be issued and instructions will be communicated on how to return the unit for repair.

Accessories/Replacements

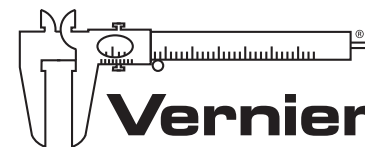
Item	Order Code
Replacement Membrane Cap	MEM
DO Calibration Solution, 2.0 M sodium sulfite	DO-CAL
DO Electrode Filling Solution	FS
DO Polishing Strips	PS

Warranty

Vernier warrants this product to be free from defects in materials and workmanship for a period of five years from the date of shipment to the customer. The membrane caps, polishing strips, solutions, pipet, and bottle are all exempt from the warranty as consumables. This warranty does not cover damage to the product caused by abuse or improper use. This warranty covers educational institutions only.

Disposal

Consult product Safety Data Sheets (SDS) and your local regulations for disposal information.



MEASURE. ANALYZE. LEARN.™

Vernier Software & Technology
13979 SW Millikan Way • Beaverton, OR 97005-2886
Toll Free (888) 837-6437 • (503) 277-2299 • Fax (503) 277-2440
info@vernier.com • www.vernier.com

Rev. 6/10/16

Logger *Pro*, Logger *Lite*, Vernier LabQuest 2, LabQuest Mini, and other marks shown are our trademarks or registered trademarks in the United States.

All other marks not owned by us that appear herein are the property of their respective owners, who may or may not be affiliated with, connected to, or sponsored by us.